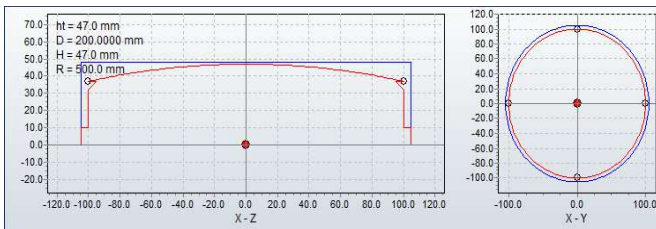


SGM150 - A

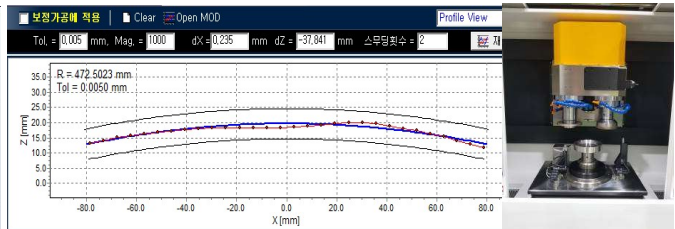
Spherical Lens Grinding Machine

TechMAC Co., LTD **MAC**

- ◇ Glass Grinding for Spheric & Aspheric Lens
- ◇ 5 AXIS Mechanism (3 translation, 2 rotation)
- ◇ High Frequency Spindle (2Head)
 - Cup type/ Disk type Wheel
- ◇ On Machine Measuring
- ◇ PC based CNC



시스템 인터페이스



OMM Results

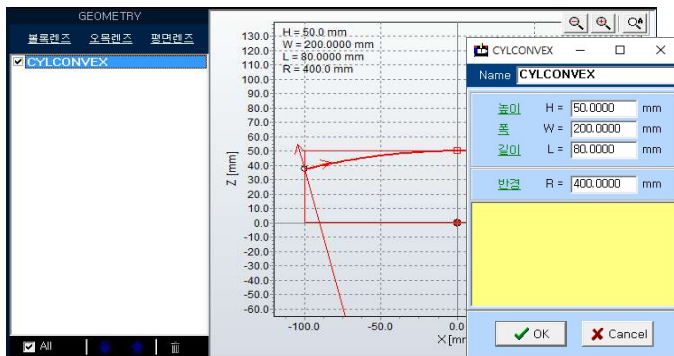
Specifications

Machining Range	X Axis	1100mm
	Y Axis	300mm
	Z Axis	100mm
	B Axis	∞
	C Axis	± 180 degree
Machining Resolution	X Axis	0.0001mm
	Y Axis	0.0001mm
	Z Axis	0.0001mm
	B Axis	0.0001 degree
	C Axis	0.0001 degree
Accuracy	Straightness of X Axis	$\pm 2 \mu\text{m}$
	Straightness of Y Axis	$\pm 2 \mu\text{m}$
	Straightness of Z Axis	$\pm 2 \mu\text{m}$
	Run-out of B/C Axis	Below $2 \mu\text{m}$
Measuring	Touch Probe	Repeatability : 1um Radius, Thickness
Chucking	Vacuum Pad	
Function	Using XYZBC	Spheric/Aspheric Grinding OD Grinding Truncation Chamfering Hole Drilling

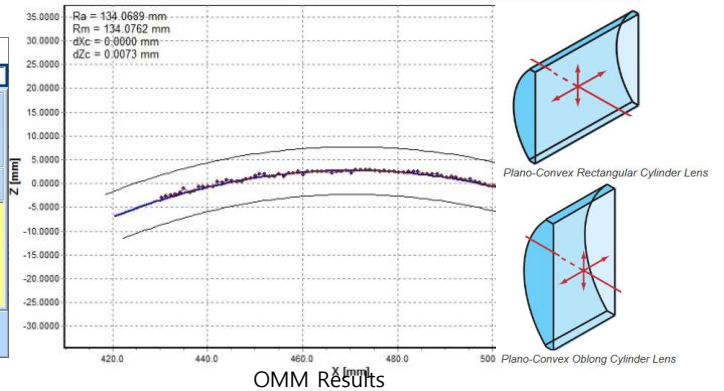
CGM-1000 Cylinder Lens Grinding Machine

- ◇ Glass Grinding for Cylinder Lens
- ◇ 4 AXIS Mechanism (3 translation, 1 rotation)
- ◇ High Frequency Spindle
- ◇ Cylinder lens Style Selection by C Axis
- ◇ Control Panel with Hand-wheel Jog
- ◇ Post Processing Software
- ◇ PC based CNC

TechMAC Co., LTD **MAC**



시스템 인터페이스



OMM Results

Specifications

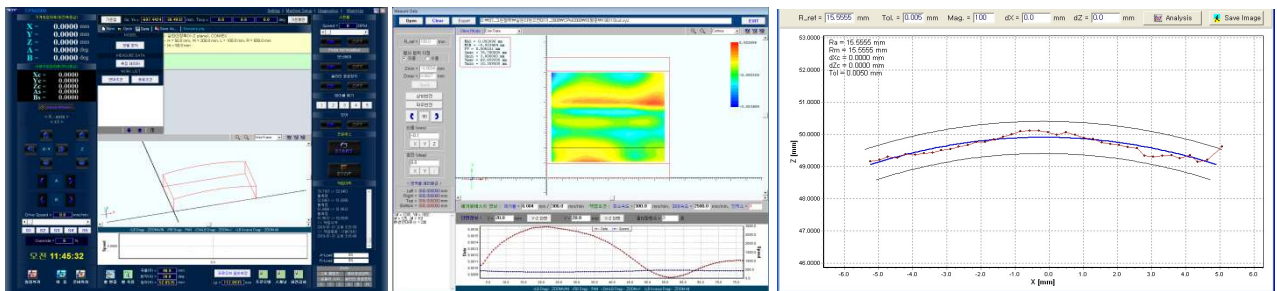
Machining Range	X Axis	1100mm
	Y Axis	300mm
	Z Axis	100mm
	C Axis	±180 degree
Machining Resolution	X Axis	0.0001mm
	Y Axis	0.0001mm
	Z Axis	0.0001mm
	C Axis	0.0001 degree
Accuracy	Straightness of X Axis	± 2 μm
	Straightness of Y Axis	± 2 μm
	Straightness of Z Axis	± 2 μm
	Run-out of C Axis	2 μm
Measuring	Touch Probe	Repeatability : 1um Radius, Thickness
Chucking	Vacuum Pad	
CNC Controller	PC based Control	XYZ Interpolation

CPM2000 - A

Cylindrical Lens Polishing Machine

TechMAC Co., LTD **MAC**

- ◇ Glass Polishing for Cylindrical Lens
- ◇ 5 AXIS Mechanism (3 translation, 2 rotation)
- ◇ High Frequency Spindle
- ◇ On Machine Measuring
- ◇ Pre-Polishing, Corrective Polishing
- ◇ PC based CNC



시스템 인터페이스

간접계 데이터 기반 속도 프로파일

OMM Results

Specifications

Machining Range	X Axis	2200mm
	Y Axis	400mm
	Z Axis	400mm
	A Axis	±185 degree
	B Axis	±185 degree
Machining Resolution	X Axis	0.0001mm
	Y Axis	0.0001mm
	Z Axis	0.0001mm
	A Axis	0.0001 degree
	B Axis	0.0001 degree
Accuracy	Straightness of X Axis	± 5 μm
	Straightness of Y Axis	± 2 μm
	Straightness of Z Axis	± 2 μm
Measuring	Touch Probe	Repeatability : 1um Radius, Thickness
Function	Using XYZAB	Spheric Polishing Aspheric Polishing Flat Polishing