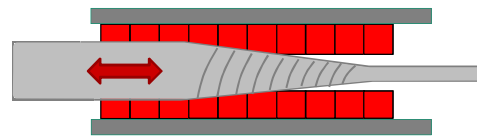
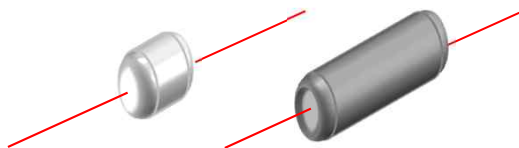
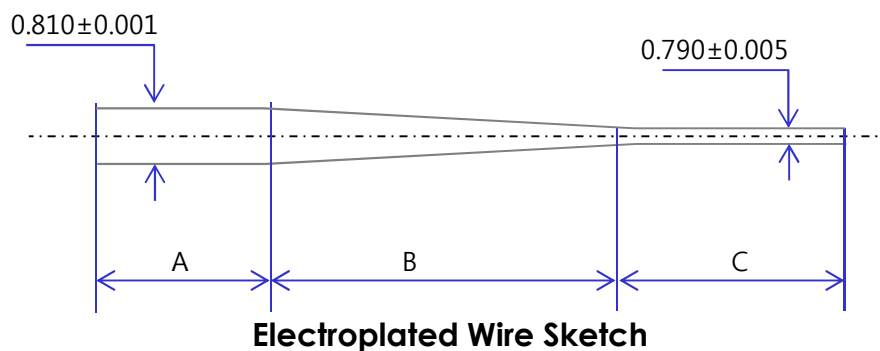


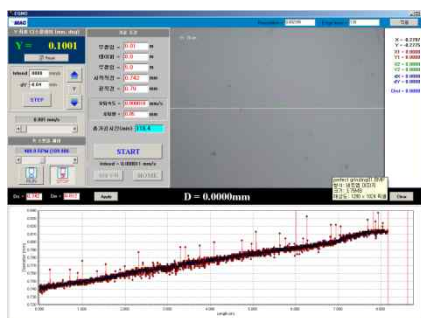
Tapered Wire Tool

- Features

- Cylindrical part + Tapered part + second Cylindrical part
- Continuous Groove for Slurry Flow
- I.D. Honing Process for finished size of the hole
- Made by Special Center-less Grinding



- Environment



- Usable Materials

- Tungsten Carbide
- Ceramic
- Sapphire/Ruby
- Poly Crystal Diamond
- etc.

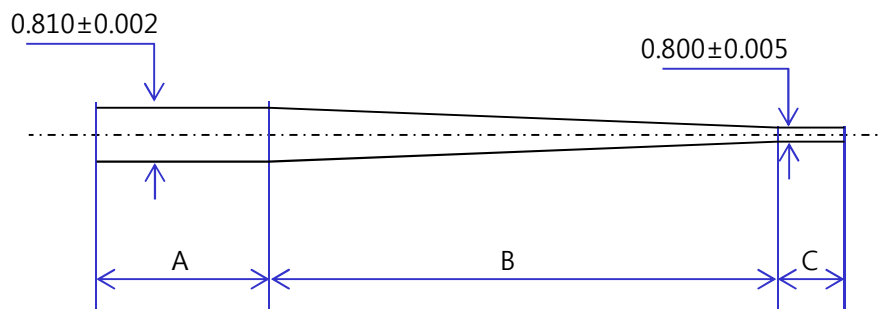


TechMAC Co., Ltd.
Advanced Precision System

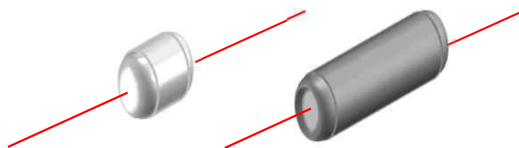
Electroplated Wire Tool

- Features

- Cylindrical part + Tapered part + second Cylindrical part
- Continuous Groove for Slurry Flow
- I.D. Honing Process for finished size of the hole
- Electroplated wire with Diamond grit



Electroplated Wire Sketch



I.D. Honing

Ordering Code

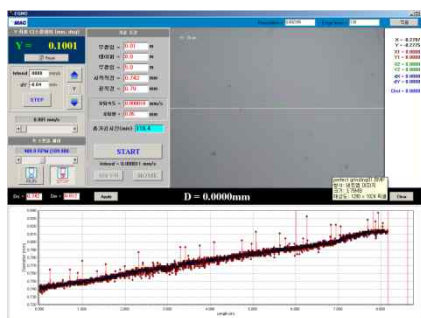
→ EWT-D-d-A-B-C

Diameter : D, d

Length : A + B + C ≤ 550

Ex> EWT-0.81-0.8-100-440-10

- Environment



- Usable Materials

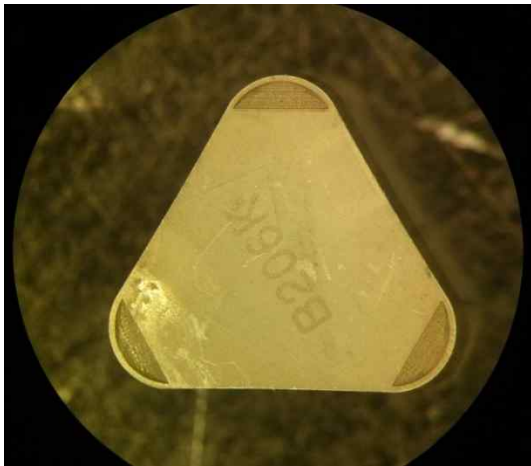
- Tungsten Carbide
- Ceramic
- Sapphire/Ruby
- Poly Crystal Diamond
- etc.



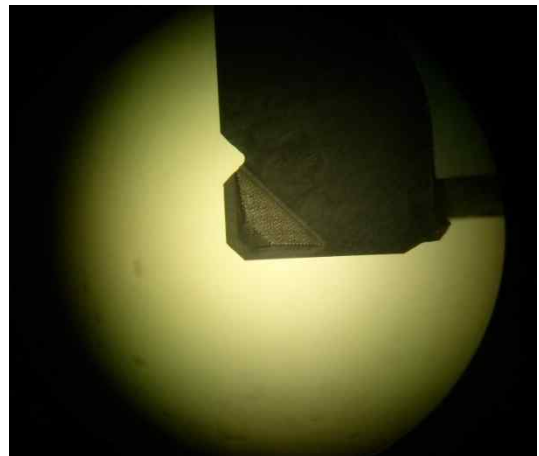
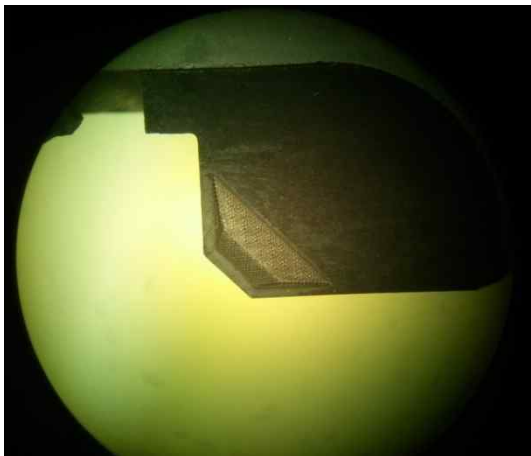
TechMAC Co., Ltd.
Advanced Precision System

PCD Chip Breaker

- Material : PCD or PCBN
- Shape : 3D
- Application : PCD PCBN Insert



Chip Breaker of PCBN Insert



Chip Breaker of PCD Insert

PCD Patterning Tool

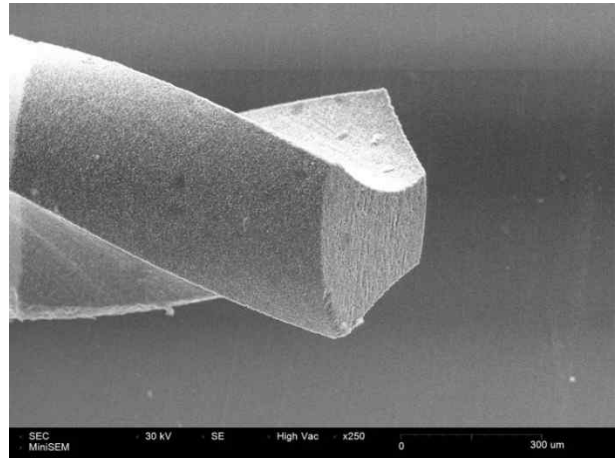
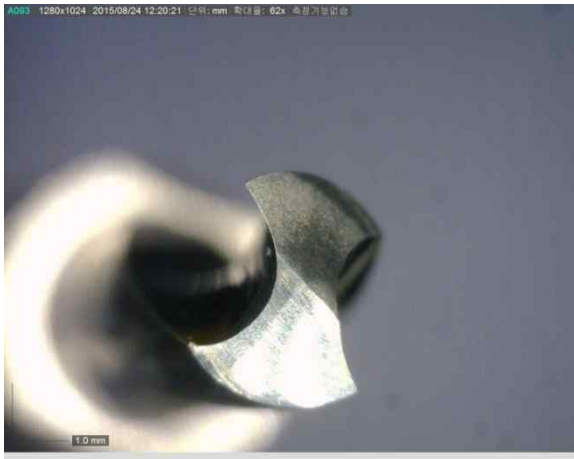
- Features
 - *Precise Allowance*
 - *Long Life*
 - *High Hardness*
- Material : PCD + WC
- Point Size : 40 μ m x 40 μ m
- Application : Mechanical Patterning Tool for Thin Film Solar Cell



TechMAC Co., Ltd.
Advanced Precision System

PCD Micro Drill

- Features
 - Improved Tool Life
 - Improved Productivity
 - Improved Hole Quality
 - Reducing Your Machining Time



PCD Drill (0.5Φ, Pivot Type)

시험 결과
(Test Results)

성적서 번호 : CWIEC-15-0029 페이지(Page): (4)/(총6)
Page of pages

2) PCD 드릴 직경

- 측정방법 : 미세 형상 현미경 을 사용하여 직접 측정
- 시험측정에 사용한 표준장비 명세 : 미세 형상 현미경 (모델 : 올림푸스, BX51 -5x 대물렌즈)
- 측정결과

측정항목	허용기준	측정단위	측정값
직경	500nm	nm	499.152

- 측정사진 및 측정DATA

시험 결과
(Test Results)

성적서 번호 : CWIEC-15-0029 페이지(Page): (5)/(총6)
Page of pages

3) 표면 거칠기 측정

- 측정방법 : PCD 방전면과 연삭면 부위를 조도측정기를 이용한 직접측정
- 시험측정에 사용한 표준장비 명세 : 표면조도계 (Alpha step IQ)
- 측정결과

측정항목	허용기준	측정단위	측정값
거칠기 (Ra)	PCD방전면:0.2um	um (Ra)	0.1866
	PCD연삭면:0.1um	um (Ra)	0.0714

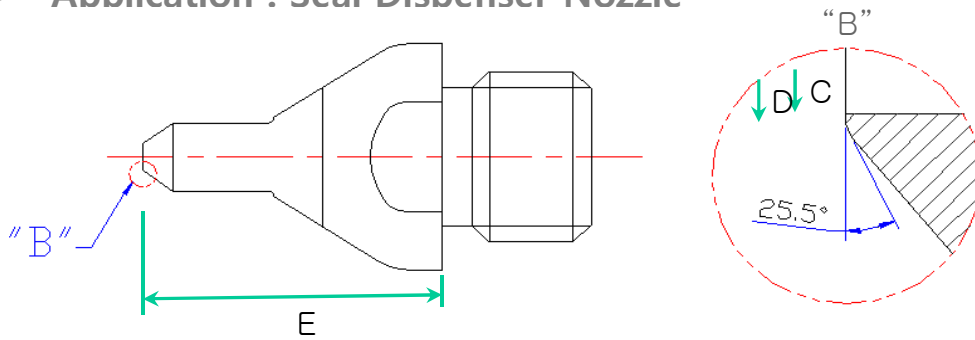
- 측정사진



TechMAC Co., Ltd.
Advanced Precision System

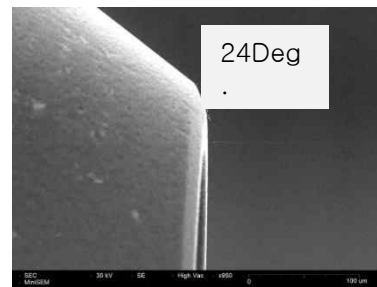
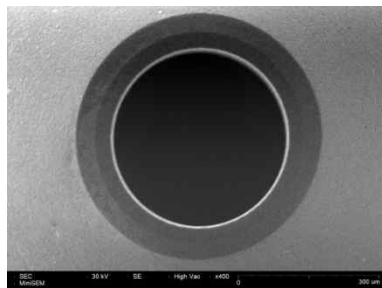
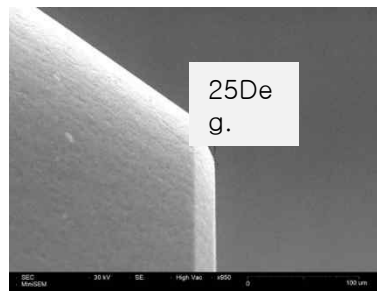
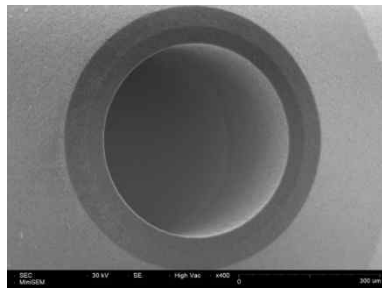
LCD Nozzle(PCD)

- Features
 - Precise Allowance
 - Long Life
 - Corrosion Resistant
- Material : PCD + SUS
- Standard Size : $\Phi 0.2 \sim \Phi 0.45$ (user define)
- Application : Seal Dispenser Nozzle



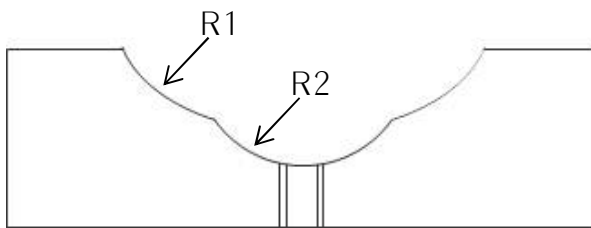
LCD Nozzle Shape

	기준 치수	가공 치수
C	Dia. 0.4 +0.005	Dia. 0.402
D	Min Dia. 0.45 Max Dia. 0.46	Dia. ?
E	L 5.0 +-0.01	L 5.025

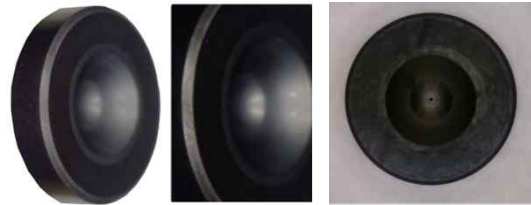


Multi-Step Round Nozzle(PCD)

- **Features**
 - *Precise Allowance*
 - *Long Life*
 - *Corrosion Resistant*
- **Material : PCD + WC**
- **Standard Size : $\Phi 0.1 \sim \Phi 0.45$ (user define)**
- **Application : Dispensing Nozzle**



Round Nozzle Shape



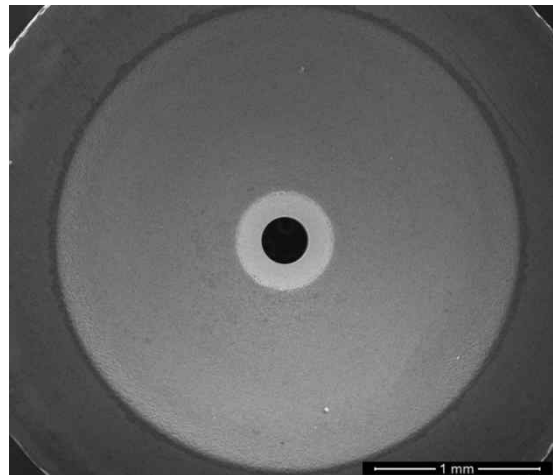
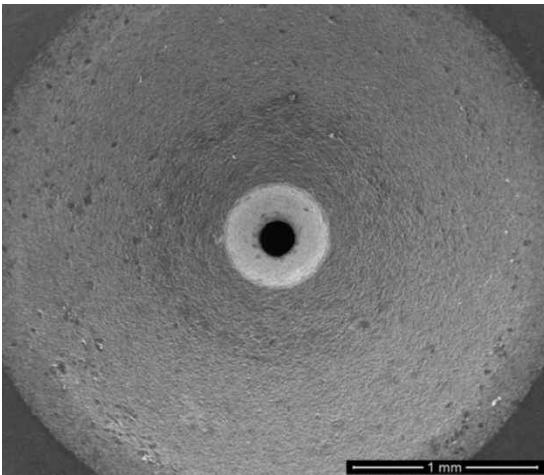
TechMAC Co., Ltd.
Advanced Precision System

Hard Material Dispensing Nozzle(PCD)

- Features
 - *Precise Allowance*
 - *Long Life*
 - *Corrosion Resistant*
- Material : PCD + WC
- Standard Size : $\Phi 0.1 \sim \Phi 0.45$ (user define)
- Application : Hard Material Dispensing



PCD Nozzle Shape



TechMAC Co., Ltd.
Advanced Precision System

Other PCD Tools – Tapered Pin, Roller Breaker, Jig

- Material : PCD
- Shape : Tapering
- Application : PCD PCBN Insert



- Material : PCD
- Shape : Round
- Application : LCD Breaking



- Material : PCD & WC
- Application : Chip Mount Jig

