

3D Laser Micro Machining System

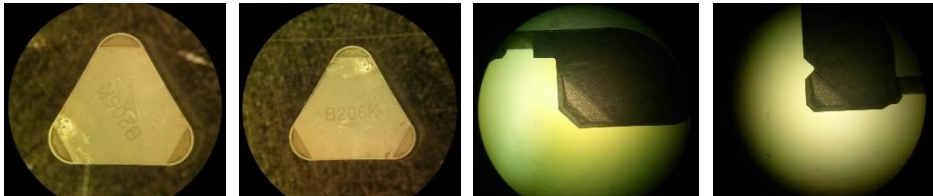
Features

- : 532nm Pulsed Fiber LASER
- : 3D Scan Head
- : XYZ Axes Precision Control
- : Optimal MC for 3D Machining



Application

- PCD/PCBN Chip-breaker
- PCD/PCBN Nozzle
- 3D Shaping
- Laser Micro-Machining



Specifications

Motorized Stage	Stroke	X axis	150mm
		Y axis	150mm
		Z axis	100mm
	Resolution	Linear Motion	0.0001mm
	Maintenance Cycle		12 months
LASER Source	Wavelength		532nm
	Average Power		10W
	Pulse Energy		15uJ
Security Feature	Cooling		Ensuring a safe temperature
	Security Window		Laser shield with safety locks
Dimension			1600x1000x1600mm
Options		Scanning Solutions	
		Longer Stroke	
		BMO(Beam Manipulation Optics)	
		Power Detection/Monitoring	



TechMAC Co., Ltd.
Advanced Precision System

Multi-axis LASER Machining System

Features

- : Q-switched DPSS LASER
- : High Peak Power
- : red guide laser and isolator
- : XYZAC Axes Precision Control
- : Optimal MC for Small Axisymmetric Parts

Application

- PCD/PCBN Chamfering
- PCD/PCBN Nozzle
- Laser Micro-Machining



Specifications

Motorized Stage	Stroke	X axis	150mm
		Y axis	150mm
		Z axis	100mm
	Resolution	Linear Motion	0.0001mm
	Maintenance Cycle		12 months
LASER Source	Wavelength		1064nm
	Average Power		5W
	Pulse Energy		0.15mJ
Security Feature	Cooling		Ensuring a safe temperature
	Security Window		Laser shield with safety locks
Dimension			1200x1600x1600mm
Options		Scanning Solutions	
		Longer Stroke	
		BMO(Beam Manipulation Optics)	
		Power Detection/Monitoring	



Laser Cutting Machine

Features

- : IR 150W Fiber Laser
- : CW/QCW Mode
- : XYZ Axes Precision Control
- : Adjustable Cutting Nozzle

Application

- PCD/PCBN Cutting
- Sapphire Wafer Cutting
- Metal Plate Cutting



Specifications

Motorized Stage	Stroke	X axis	150mm
		Y axis	150mm
		Z axis	40mm
	Resolution	Linear Motion	0.0001mm
	Maintenance Cycle		12 months
LASER Source	Wavelength		1070nm
	Average Power		150W
	Pulse Energy		15J
Security Feature	Cooling		Ensuring a safe temperature
	Security Window		Laser shield with safety locks
Dimension			1600x1000x1600mm
Options		Scanning Solutions	
		Longer Stroke	
		BMO(Beam Manipulation Optics)	
		Power Detection/Monitoring	



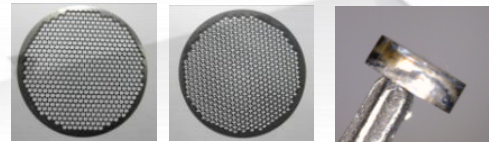
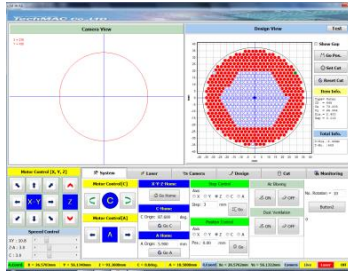
Laser ID/OD Machining System

Features

- : IR 20W Fiber LASER
- : High Stiffness/Fine Resolution
- : Optical Tilting Axis
- : XYZ Axes Precision Control
- : Optimal MC for Perpendicular Cutting

Application

- Laser Micro Machining
- ID/OD Perpendicular Cutting
- PCD Cutting



Specifications

Motorized Stage	Stroke	X axis	180mm
		Y axis	180mm
		Z axis	100mm
	Resolution	Linear Motion	0.0001mm
	Maintenance Cycle		12 months
LASER Source	Wavelength		1064nm
	Average Power		20W
	Pulse Energy		1mj
Security Feature	Cooling		Ensuring a safe temperature
	Security Window		Laser shield with safety locks
Dimension			1600x1000x1600mm
Options		Scanning Solutions	
		Longer Stroke	
		BMO(Beam Manipulation Optics)	
		Power Detection/Monitoring	

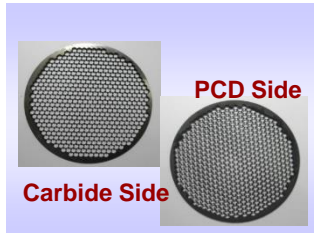
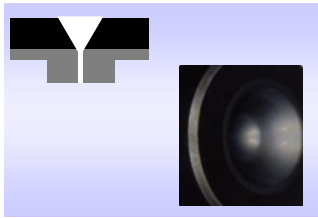


TechMAC Co., Ltd.
Advanced Precision System

Laser Micro Machining System

Application

- PCD/PCBN Cutting
- PCD/PCBN Nozzle
- Laser Machining



Specifications

Motorized Stage	Stroke	X axis	150mm
		Y axis	150mm
	Resolution	Z axis	100mm
		Linear Motion	0.0001mm
LASER Source	Maintenance Cycle		12 months
	Wavelength		1064nm
	Average Power		20W
	Pulse Energy		1mJ
Security Feature	Cooling	Ensuring a safe temperature	
	Security Window	Laser shield with safety locks	
Dimension			1200x1600x1600mm
Options	Scanning Solutions		
	Longer Stroke		
	BMO(Beam Manipulation Optics)		
	Power Detection/Monitoring		



TechMAC Co., Ltd.
Advanced Precision System

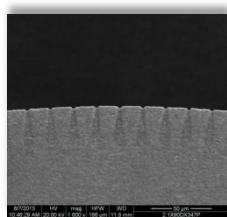
Laser Micro Machining System

Features

- : UV Pico LASER Source
- : High Stiffness/Fine Resolution
- : XYZC Axes Precision Control
- : Optimal MC for Micro Machining

Application

- Laser Micro Machining
- 3D Machining for Hard Materials
- PCD Micro Shaping



Specifications

Motorized Stage	Stroke	X axis	150mm
		Y axis	150mm
		Z axis	100mm
		C axis	∞
	Resolution	Linear Motion	0.0001mm
		Rotary Motion	0.0001°
	Maintenance Cycle		12 months
LASER Source	Wavelength		355nm
	Average Power		1.5W
	Pulse Energy		7.5uJ
Security Feature	Cooling		Ensuring a safe temperature
	Security Window		Laser shield with safety locks
Dimension			2000x1600x2000mm
Options		Scanning Solutions	
		Longer Stroke	
		BMO(Beam Manipulation Optics)	
		Power Detection/Monitoring	



TechMAC Co., Ltd.
Advanced Precision System